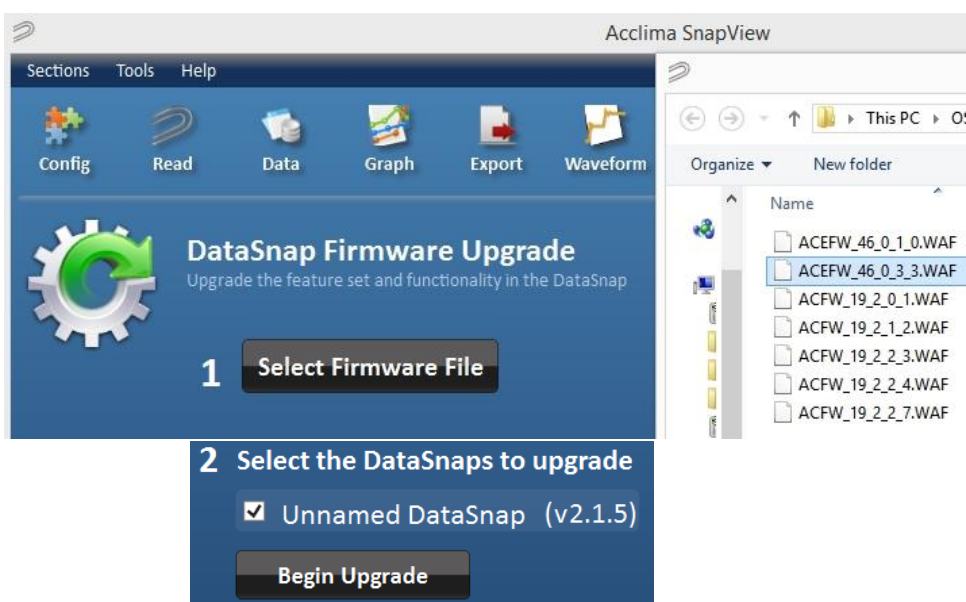


Upgrading/Installing Your SnapView Software and the Firmware of DataSnap Data Logger

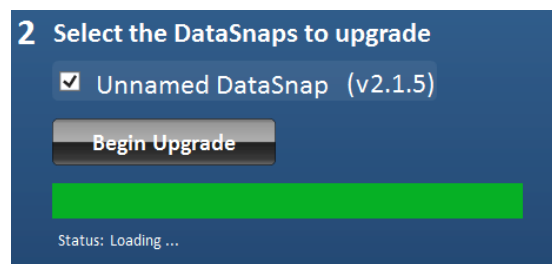
To run the Waveform Capture module in the SnapView software you will need to download and run the latest version of SnapView for Windows®. As of this writing that would be version 140 or greater (AcclimaSnapView_Setup140.exe). The software can be downloaded from <https://www.acclima.com/sdiproducts.html> under the appropriate data logger.



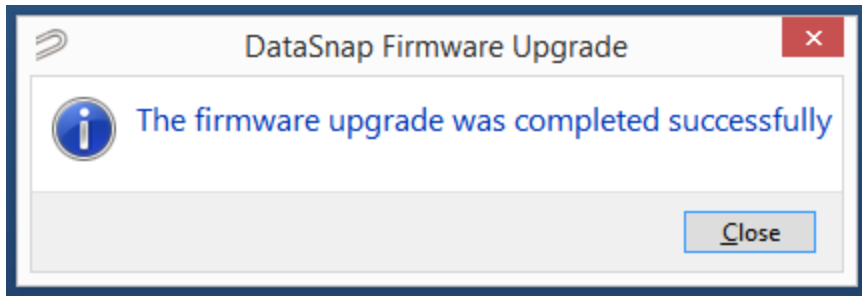
That software also contains the latest necessary firmware for the standard DataSnap (as of this writing version **ACFW_19_2_2_7.WAF**) as well as for the Solar DataSnap (as of this writing **ACEFW_46_0_3_3.WAF**). The software will prompt you to upgrade the firmware if Waveform Capture is not supported by the currently installed firmware. A window with a list of available firmware upgrade files will appear. Left click the appropriate version.



Once you have selected the proper firmware and clicked 'Open', left click the 'Begin Upgrade' button. You will then see a status bar for a few seconds while it progresses to 100%.



You will then see the following message box appear if the upgrade is successful.



Opening the Waveform Capture Module in SnapView

To open the waveform capture module in SnapView, click the 'Waveform' icon.



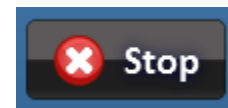
This action will automatically connect the SnapView software to the USB-cable-attached Solar DataSnap or DataSnap data logger and will open the waveform capture module listing sensors configured to the data logger.



If the PC goes into sleep mode you may not see the active sensors listed on the left and will have to click the 'Config' button and click 'Connect' then return to the waveform capture module.

Select one sensor in the list by clicking on it. Any sensor in the list that is highlighted white, that sensor is currently connected and configured to the data logger. If the sensor is subdued in light blue, that is an indication that the sensor was once configured with the DataSnap but is no longer connected.

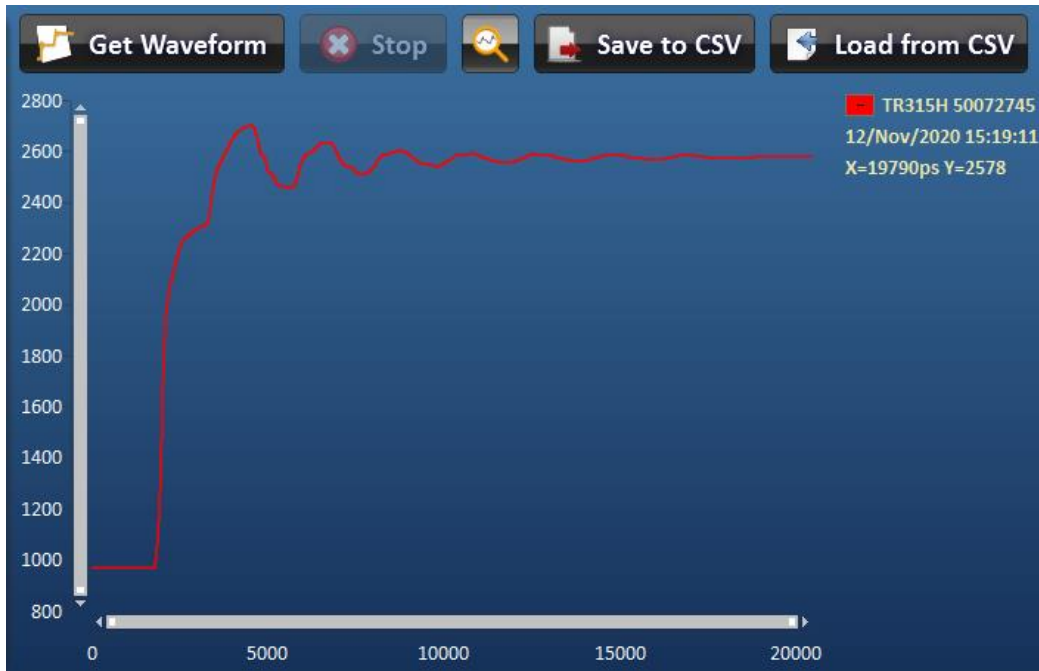
Note: If you left click the '**Refresh List**' button the software will look for any newly connected and configured sensors attached to the DataSnap. If the desired new sensor is immediately shown, you may left click the '**Stop**' button to stop the list from refreshing further.



With the sensor selected, left click the '**Get Waveform**' button to start the waveform graphing.



A waveform graph will then will begin to be generated similarly to the picture below, (time can vary from a few seconds to 15 minutes depending on whether you are getting a waveform from a sensor labeled with "Waveform Capture" or not):



Acclima SnapView

Sections Tools Help

Config Read Data Graph Export Waveform

Waveforms

Gather waveform data from attached TDR/TDT sensors

Refresh List This sensor provides high resolution waveforms at higher data rates. Long wires may cause data errors.

Attached compatible devices:

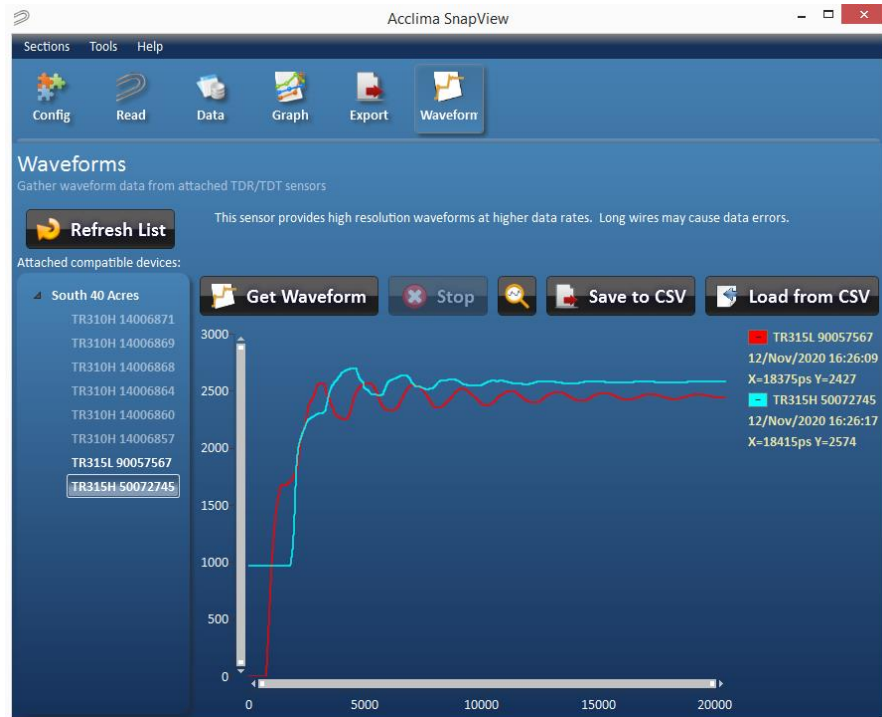
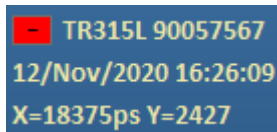
- South 40 Acres
 - TR310H 14006871
 - TR310H 14006869
 - TR310H 14006868
 - TR310H 14006864
 - TR310H 14006860
 - TR310H 14006857
 - TR315L 90057567
 - TR315H 50072745**

The Legend

The waveform line will be color coded to the sensor from which the waveform was taken with the serial number and timestamp legend. Subsequent waveforms taken from different sensors will show up with different color codes and an extended legend.

Deleting a Waveform

The minus within the colored (e.g. red) box in the legend can be used to delete the waveform when left-clicked with the mouse.

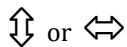


Zooming

The user can left click drag a square from upper left to lower right direction over a section of the waveform that needs closer inspection. A zoomed-in presentation of that waveform section will appear after releasing the left mouse button. To reset the graph to the full view mode just left click the 'Reset zoom' (magnifying glass icon).



The X, Y axis can be lengthened or shortened with the mouse pointer by hovering the mouse pointer over the end of the X or Y scroll bar until a double ended arrow appears.



Pressing and holding the left mouse button at that point will grab the end of the scroll bar to allow lengthening and shortening of the scroll bar which zooms in and zooms out. Left clicking the 'Reset zoom' (magnifying glass icon) will return the graph to full view.

Saving to CSV File

A waveform or several waveforms can be exported to a CSV file by left clicking the 'Save to CSV' file.



At this point the save dialog box will appear and you will have the ability to choose the folder in which to save the waveform information. You will also be able to change the name from the default. The default name will end with a number reflecting the day, month, year, and military time the waveform was taken.

Loading from a CSV File

A waveform graph can be loaded from a CSV file by left clicking the '**Load from CSV**' button.



An open file dialog file will appear allowing you to navigate to the desired CSV file. Once selected, left click '**Open**'. The CSV file will generate one or more stored waveforms.

Fast and Slow Capture Methods

If you pull a waveform using an Acclima TDR that has "*Waveform Capture*" printed on the label, the waveform should show up within several seconds of clicking the '**Get Waveform**' button. If you use an older Acclima sensor without the designation of being able to capture a waveform, you can still collect a waveform by selecting that sensor in the list and left clicking '**Get Waveform**' button. The capture will begin, but due to the older design of the sensor it will take approximately 12-15 minutes to generate the graph. If you find that the capture is taking too long, you can cancel the capture by left clicking the '**Stop**' button.